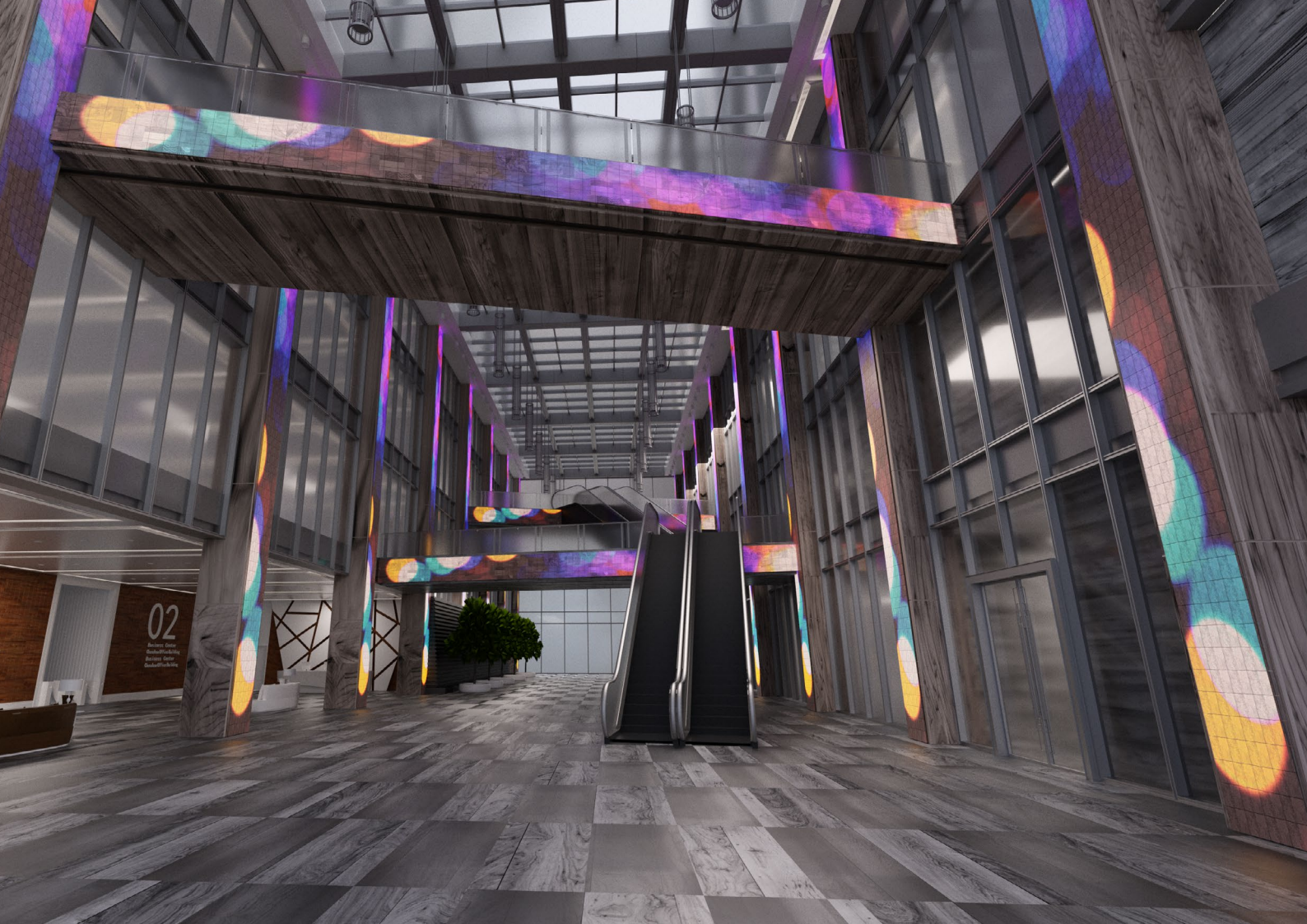




ArtMorph

Discover a New Dimension





“

ROE is consistently innovating, pushing the boundaries of the creative LED space. The new CECOCECO product has enormous potential to bring light and texture together to redefine how we experience the spaces we live and work in.

Bruce Ramus

Artistic Director from RAMUS

Bring Your Walls to Life with ArtMorph

At the intersection of light and art, ArtMorph is the answer for modern and immersive interior design solutions. ArtMorph is the ideal product for installing wall decorations that are both innovative and eye-catching time and again.

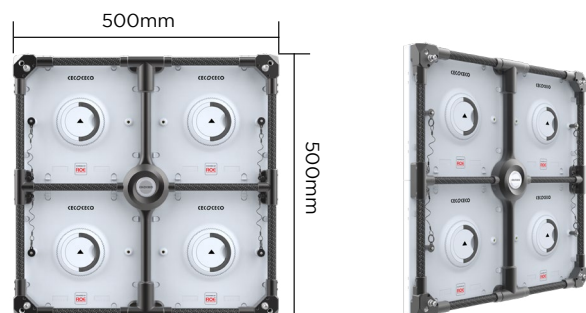
ArtMorph is a decorative, panel-based light source offering an LED-based light source with different covers to adapt your design to each environment, add an extra dimension to your space, allowing dedicated messaging or immersive visuals.

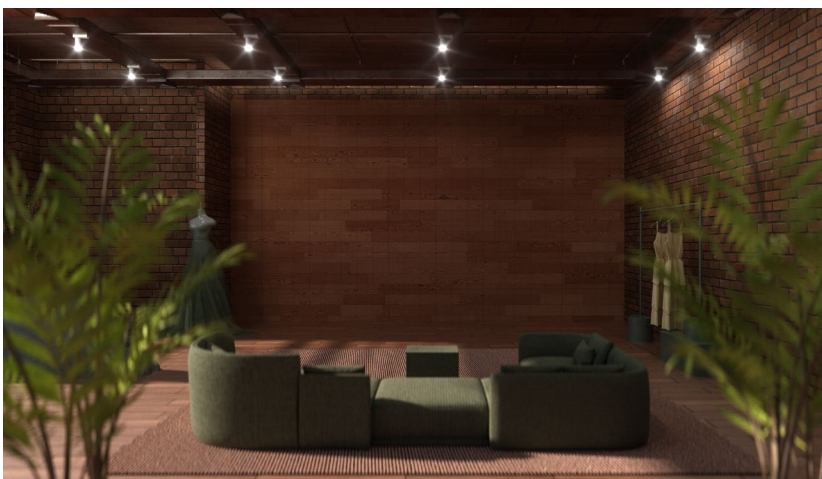


Combine Light and Visuals *Together*

ArtMorph is a high caliber LED panel that acts as both a light source and creative display. Based on a 500mm x 500mm frame, ArtMorph has high brightness up to 3000 nits.

The high-tech, energy-efficient LED panel can be transformed by a range of different surfaces, creating an aesthetically-pleasing panel that simultaneously serves as a light source.

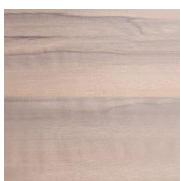




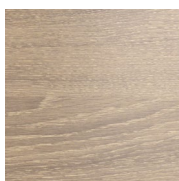
Cover Up to Stand Out

Choose the type of cover that suits the design of your space best. ArtMorph has a wide selection of surfaces, from translucent to 3D-layered designs. Acoustic dimming covers are even possible, giving you a multitude of options to choose from.

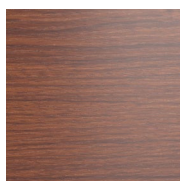
Multiple Surfaces



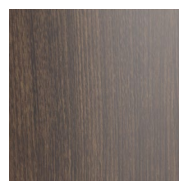
Wood 01



Wood 02



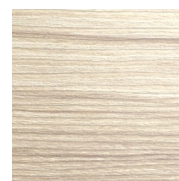
Wood 03



Wood 04



Wood 05



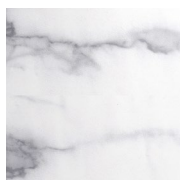
Wood 06



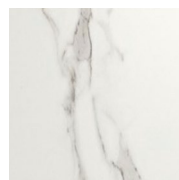
Wood 07



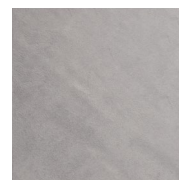
Wood 08



Marble 01



Marble 02



Marble 03



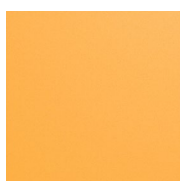
Leather 01



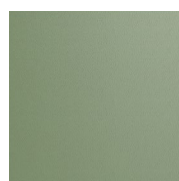
Fabric 01



Fabric 02



Yellow



Green

Customize your own surface



Freedom to Control

Use your display as an LED panel and control every single RGB pixel using an HDMI signal processor from Novastar.

Easy to Handle, Easy to Install

Configure and install ArtMorph LED panels in nearly every environment without constraints. Its flexible design allows installations in any size or shape, either wall-mounted or suspended.



Flexible Design

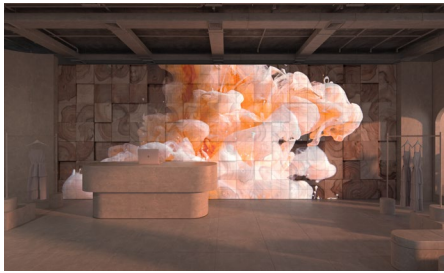


Mounting



Hanging

In Application



Retail



Food & Beverage



Hospitality



Lifestyle

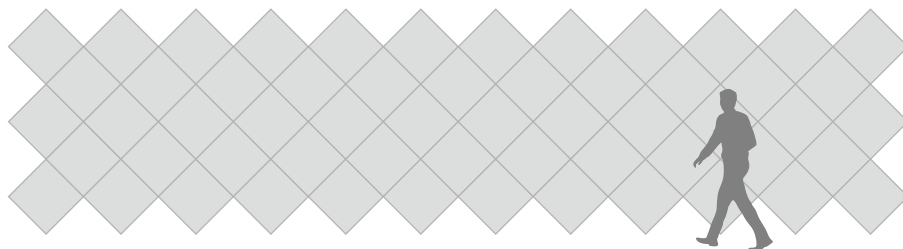
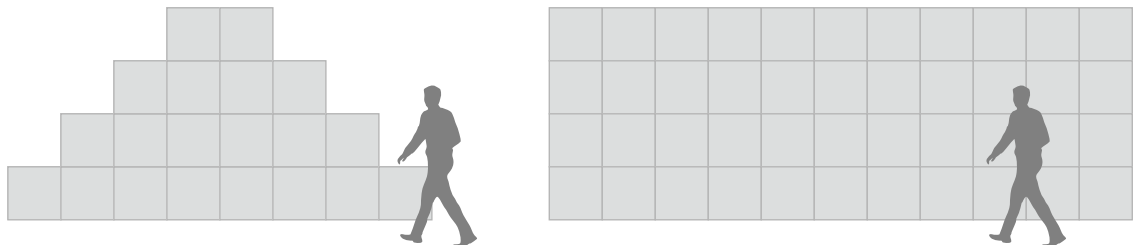


Corporate



Museums / Exhibitions

Design Reference



CECOCECO | POWERED BY ROE

www.roevisual.com | roe@roevisual.com